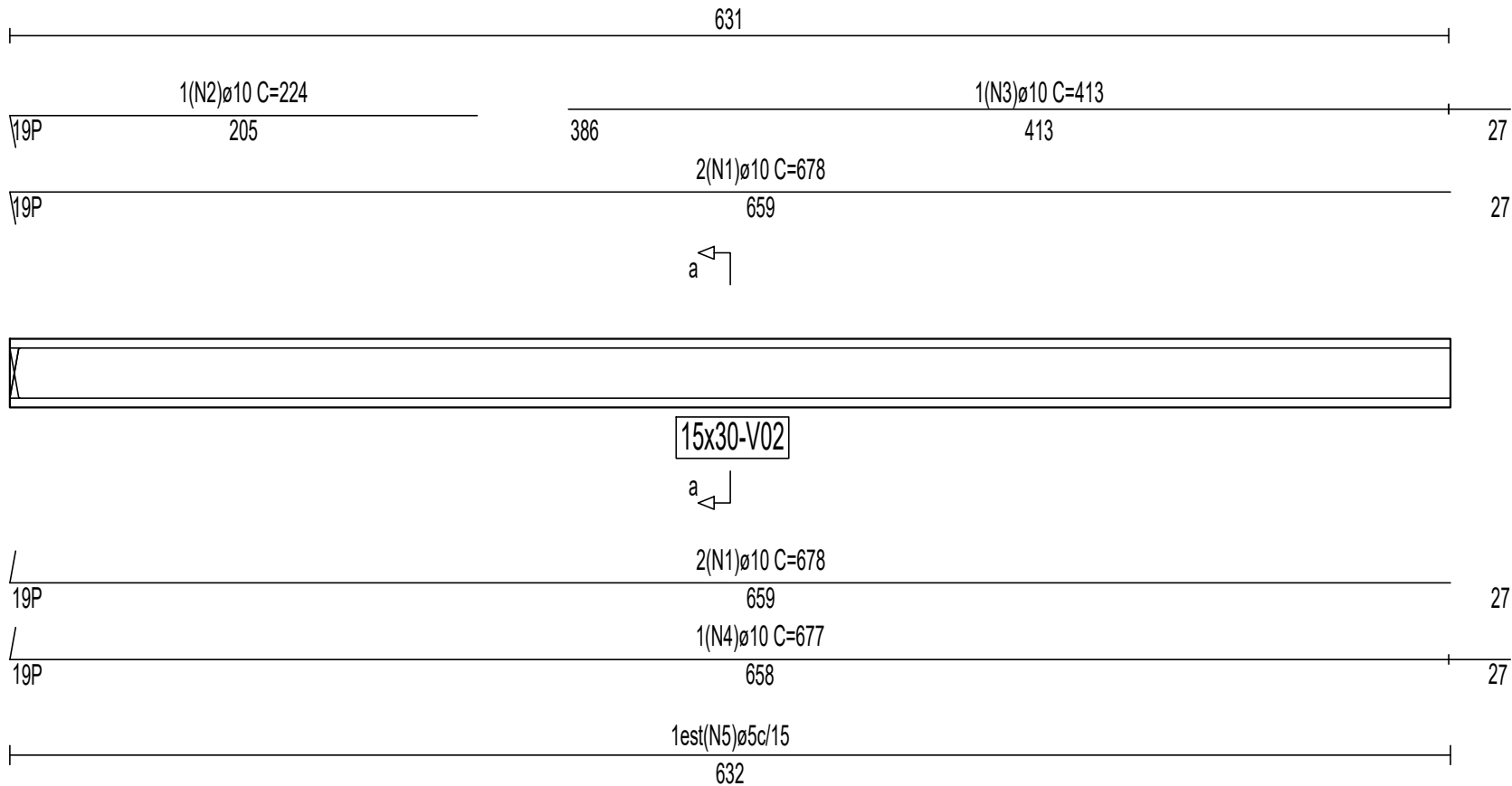
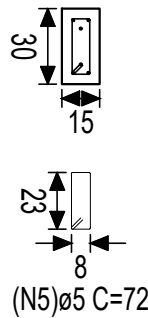


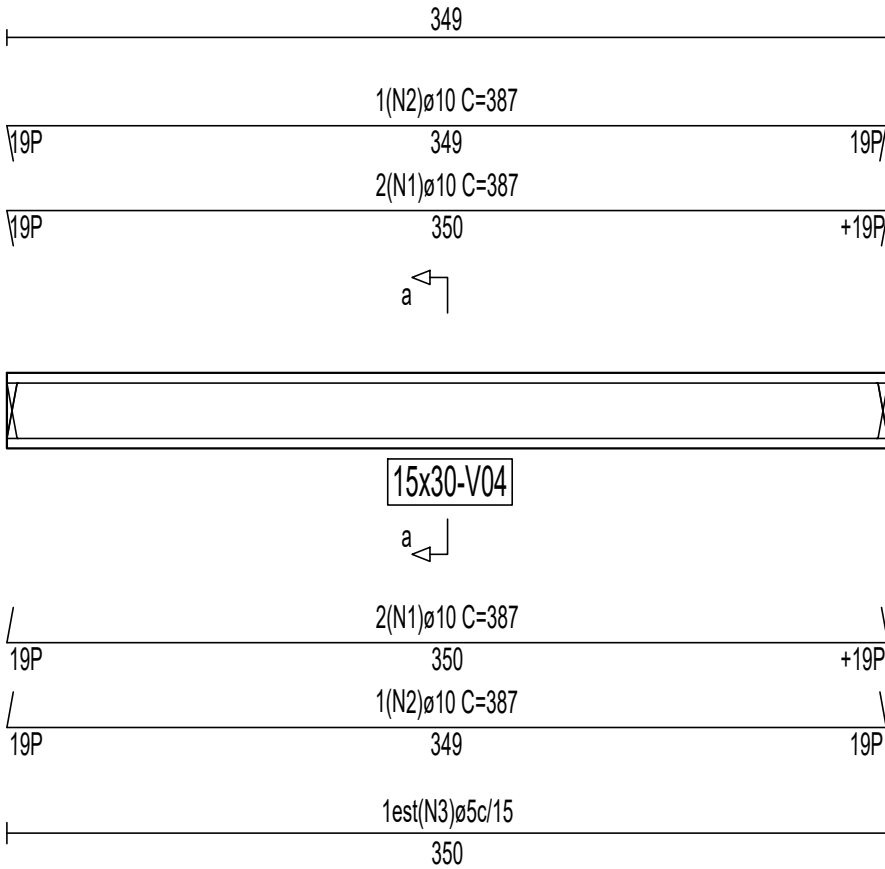
V02



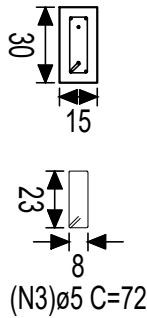
Corte a



V04



Corte a



Barra	ID	Qt.	Diâm.	Comprimento unitário (cm)				Total	
				P	C. Reto	P	C. Total	(cm)	(kg)
Vigas fora do pórtico				Aço CA-50 N 5098 Kg/cm2					
V02	1	4	ø10	19	659		678	2712	17,256
	2	1	ø10	19	205		224	224	1,425
	3	1	ø10		413		413	413	2,628
	4	1	ø10	19	658		677	677	4,308
	5	43	ø5				72	3096	4,925
	Total+10,0%								33,598

Barra	ID	Qt.	Diâm.	Comprimento unitário (cm)				Total	
				P	C. Reto	P	C. Total	(cm)	(kg)
Vigas fora do pórtico				Aço CA-50 N 5098 Kg/cm2					
V04	1	4	ø10	19	350	19	388	1552	9,875
	2	2	ø10	19	349	19	387	774	4,925
	3	24	ø5				72	1728	2,749
	Total+10,0%								19,305

DETALHADOS :
DETALHES DAS ARMADURAS DAS VIGAS BALDRAME
ESCALA 1 : 30